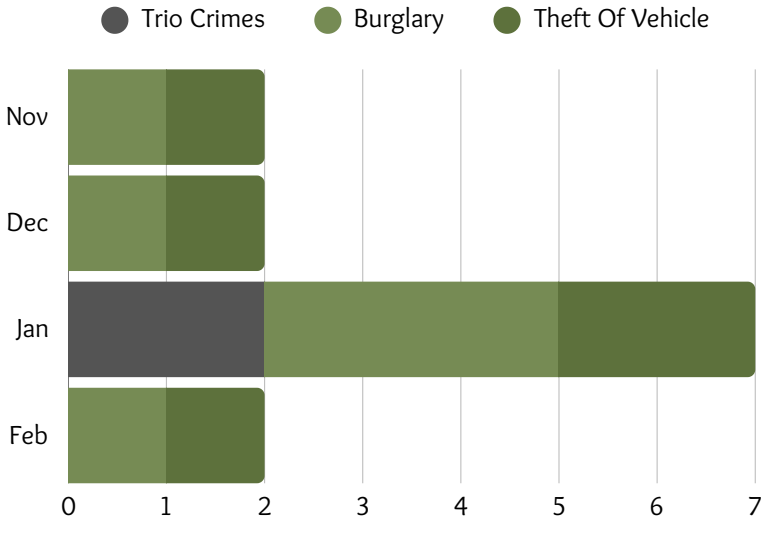


Crime Update: 2025 - 2026



Trio Crimes: Carjacking's, House and Business Robberies, including all crimes where a weapon was used.
Burglary: Illegal Entry of a building with intent to commit a crime
Theft Of Vehicle: the theft of or from a motor vehicle.

What You Can Do

- Arrange guest parking with neighbours if you don't have space inside your property.
- Avoid parking vehicles on the street overnight.
- Ensure gates cannot be lifted easily.
- Report suspicious activity immediately.
- Keep exterior lights and alarms active.

Expert Insight: A Safer Estate Starts with Active Members

Recent crime patterns show that most incidents in and around the estate remain opportunistic, with vehicles parked outside homes being the most common target.

However, January represented a targeted spike in criminal activity, with suspects actively attempting to gain access to properties. During this period, security teams worked to identify the individual linked to several housebreaking attempts in the area.

Once the suspect and associated movements were identified and monitored, activity quickly declined and crime levels returned to normal patterns in February.

This highlights the importance of intelligence-led security, strong resident reporting, and continued monitoring through technologies such as ANPR.

November Highlights

- One vehicle theft and one residential burglary were reported during the month.
- Incidents occurred during normal daytime activity periods, highlighting opportunistic criminal behaviour.
- Security patrol visibility remained consistent across the estate.
- ANPR monitoring continued to support vehicle tracing and movement analysis.

Takeaway: Opportunistic crime remains the primary risk. Securing gates, alarms, and reporting suspicious activity early remain key preventative measures.

December Highlights

- One vehicle theft and one residential burglary were reported during the festive season.
- Incidents remained isolated and opportunistic, with no broader pattern of organised activity identified.
- Security visibility and patrol coverage were maintained throughout the holiday period.
- The ANPR network continued monitoring vehicle movement, assisting with vehicle tracing and intelligence gathering.

Takeaway: Even during quieter holiday periods, opportunistic crime remains a risk. Residents are encouraged to secure homes, park vehicles inside properties where possible, and report suspicious activity promptly.

January Highlights

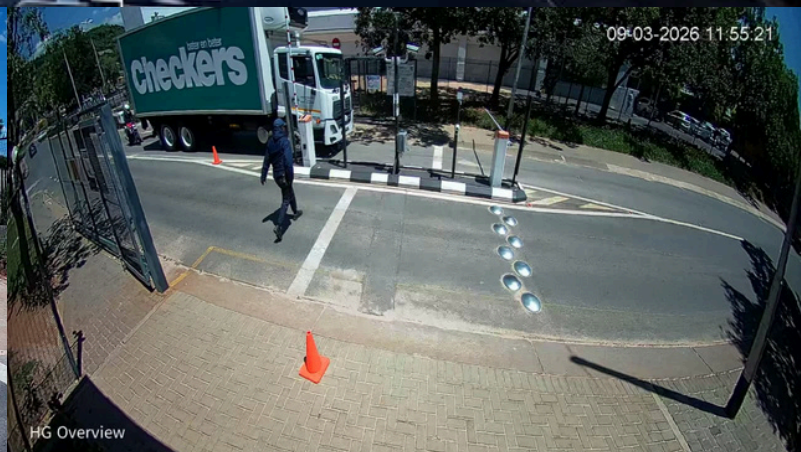
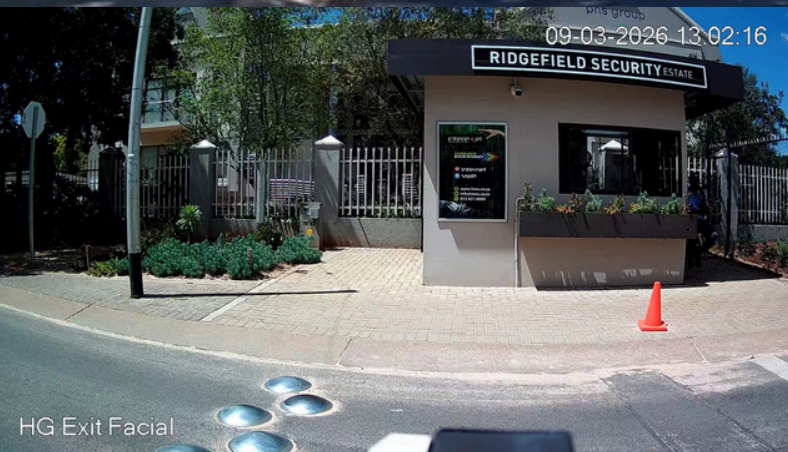
- Several attempted residential break-ins were reported during the month, with suspects attempting to lift residential gates before fleeing once detected.
- One stolen vehicle was detected entering the estate and later traced leaving toward surrounding areas.
- ANPR activity rebounded strongly with 454,490 reads (+19.6% vs December) and 221 alerts, increasing the alert ratio to 0.049%.
- Security patrol visibility and intelligence sharing remained active across the estate.

Takeaway: Most incidents were attempted rather than successful crimes, highlighting the importance of strong perimeter security and early detection.

February Highlights

- Two incidents were recorded during the month, consisting of one attempted residential break-in and one stolen vehicle detection.
- Suspect vehicles involved in incidents were traced exiting the estate toward surrounding areas.
- ANPR activity increased to 495,039 reads (+8.9%), while alerts decreased to 187, lowering the alert ratio to 0.038%.
- Security infrastructure remained stable with 97% barrier system reliability and strong guard presence during compliance monitoring.

Takeaway: Crime activity returned to lower levels following January's spike, with incidents remaining largely opportunistic rather than coordinated like before.



Hibiscus Gate - Proactive Security in Action

Ridgefield Security Estate has six gates in total, but due to financial constraints and participation levels, only five of these gates have historically been manned.

Based on recent intelligence and an observed increase in crime trends in the surrounding area, the RSE Directors made the decision to deploy a permanent day guard at Hibiscus Gate. The decision followed indications that criminals had begun using this entrance as an access and escape route.

Since the guard was introduced, no further incidents involving criminals using the Hibiscus Gate have been recorded, showing the positive impact that a visible security presence can have.

The Hibiscus Gate guard is deployed during the day, while the gate remains locked at night, over weekends, and on public holidays as part of the estate's access control measures.

This is another example of proactive steps being taken to strengthen security across the estate. Thank you to the residents whose continued support helps make these improvements possible.

Safety Tips & Recommendations

1. **Plan Guest Parking:** If you expect visitors and don't have enough space inside your property, arrange parking with neighbours rather than leaving vehicles on the street.
2. **Secure Vehicles:** Avoid parking vehicles on the street overnight. Vehicles parked outside remain the most common target.
3. **Lock Up – Day and Night:** Ensure gates, doors, and vehicles are locked at all times.
4. **Maintain Visibility:** Trim trees and bushes that create hiding places or block camera and neighbour visibility.
5. **Report Quickly:** Timely reporting is critical. Know who to call — the RSE Control Room should always be your first point of contact.

Together we will make it safer.

